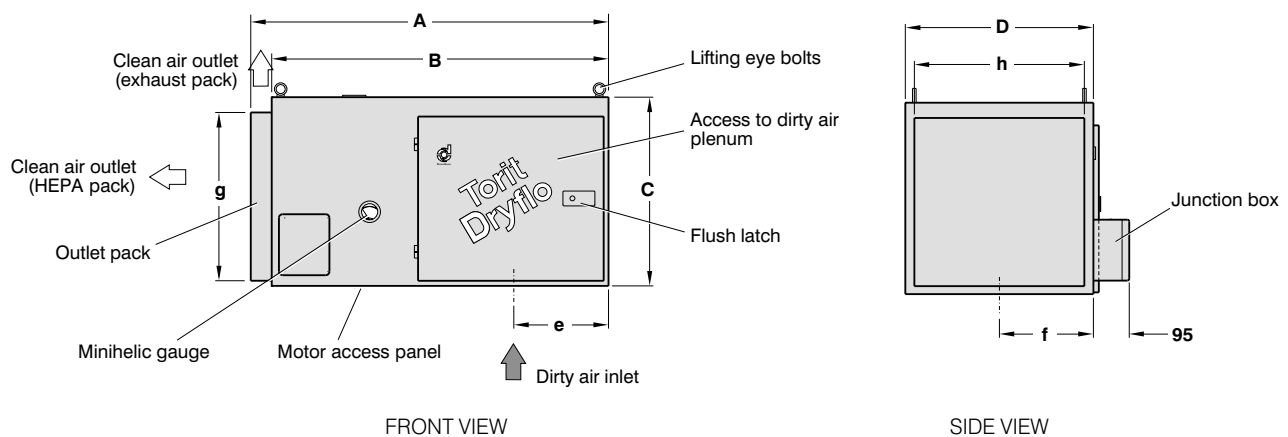


Dryflo Mist Collectors

Series DMC-MMA and DMC-MMB



Dryflo DMC-MMA and DMC-MMB mist collectors

Model DMC-MMB with exhaust pack illustrated

Model	No. of filter elements*	Filtration area	SPECIFICATIONS								Motor rating	Approx. net weight
			DIMENSIONS in mm									
			A	B	C	D	e	f	g	h		
DMC-MMA with exhaust pack with HEPA pack	1	3.8m ²	768 914	690	400	406	179	202	342 404	356	0.75 kW	39 kg
DMC-MMB with exhaust pack with HEPA pack	1	7.6m ²	990 1159	933	527	525	262.5	262.5	470 528	475	1.1 kW	75 kg

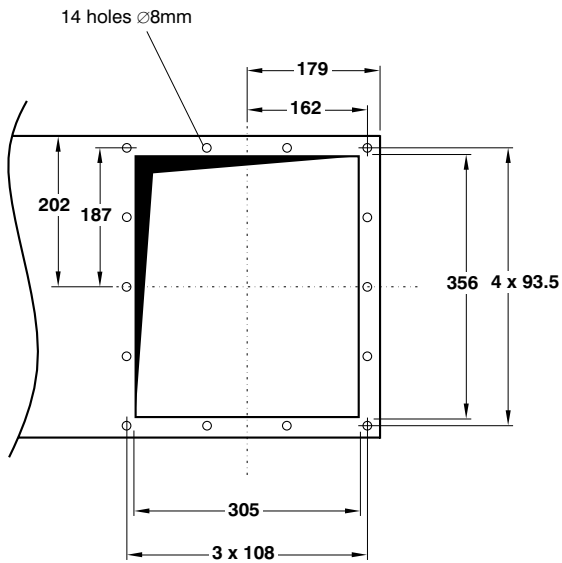
*Refer to filter element specifications in table below

FILTER ELEMENT SPECIFICATIONS

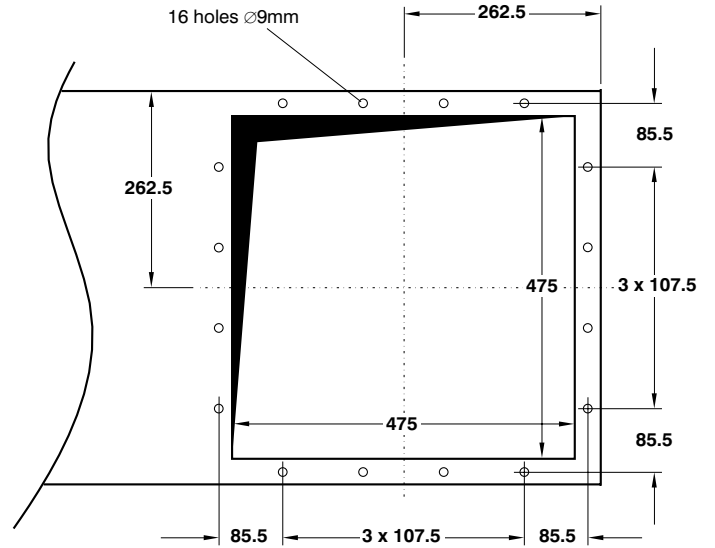
A first stage filter and a second stage filter element wrap is included per third stage filter element. Dependant on the application, a different first stage filter can be selected:

- Wire mesh (standard)
- Thin screen (for heavy particle loading applications)
- Polypropylene (for heavy liquid loading applications)

Dryflo Mist Collectors – Series DMC-MMA and DMC-MMB



Inlet details for Dryflo DMC-MMA



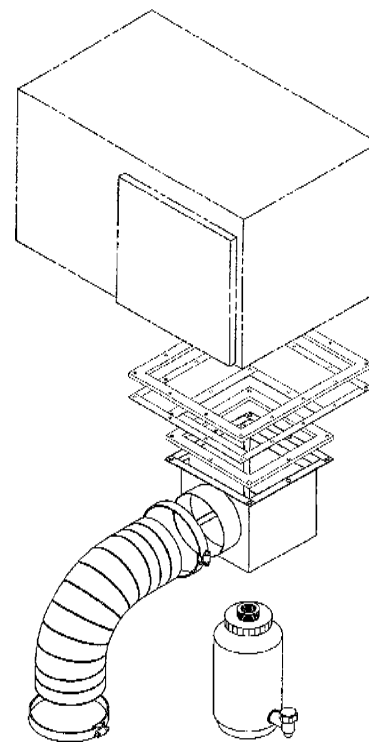
Inlet details for Dryflo DMC-MMB

OPTIONS

- Gussets – small (DMC-MMB only)
- Gussets – large (DMC-MMB only)

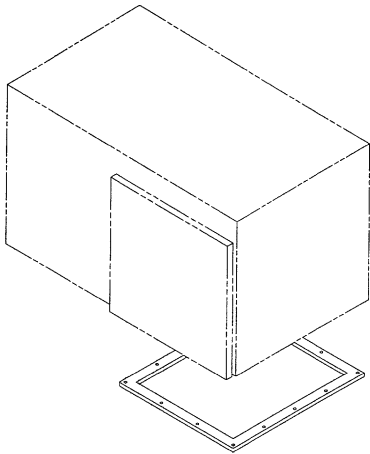
Accessories for inlet hopper / impact separator (DMC-MMA only):

- Collar inlet

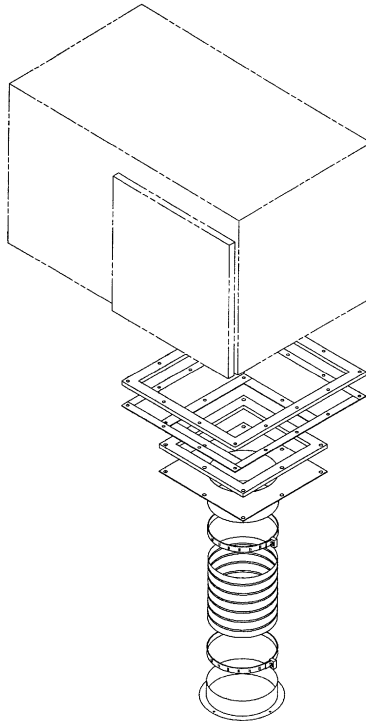


Inlet hopper / impact separator

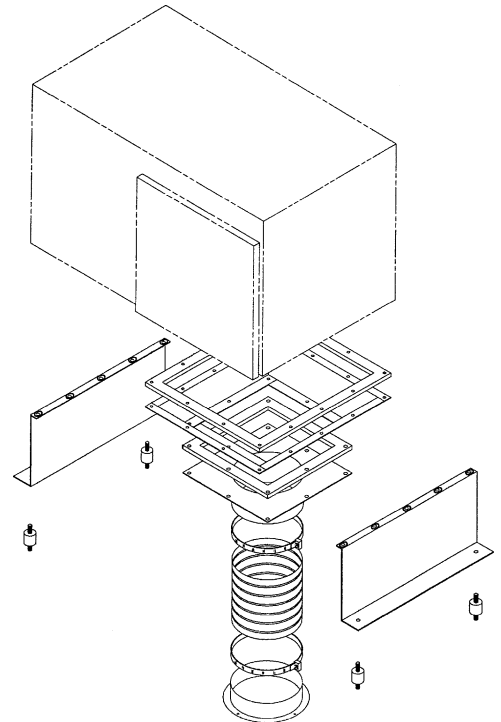
OPTIONS



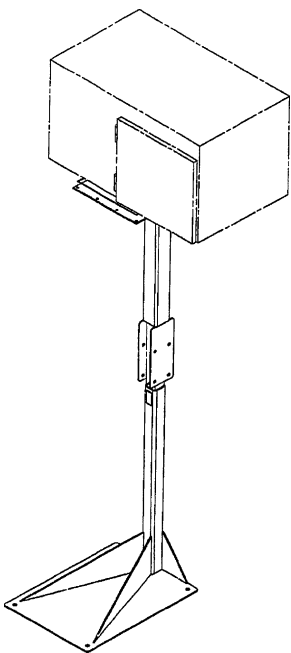
Inlet bottom gasket pack



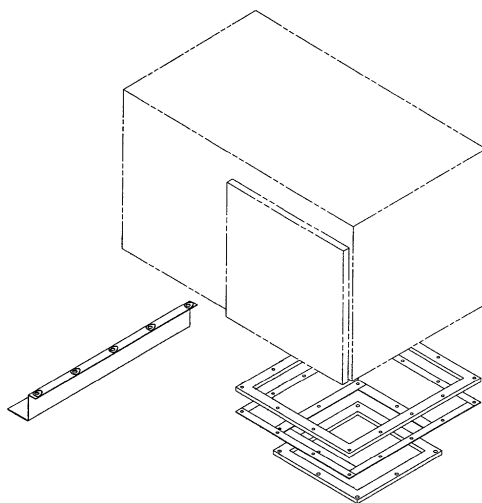
Inlet hopper with flexible duct pack



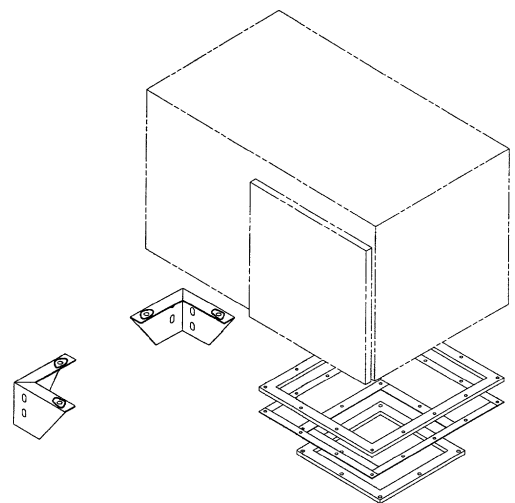
Inlet hopper / vibration isolation pack (DMC-MMA only)



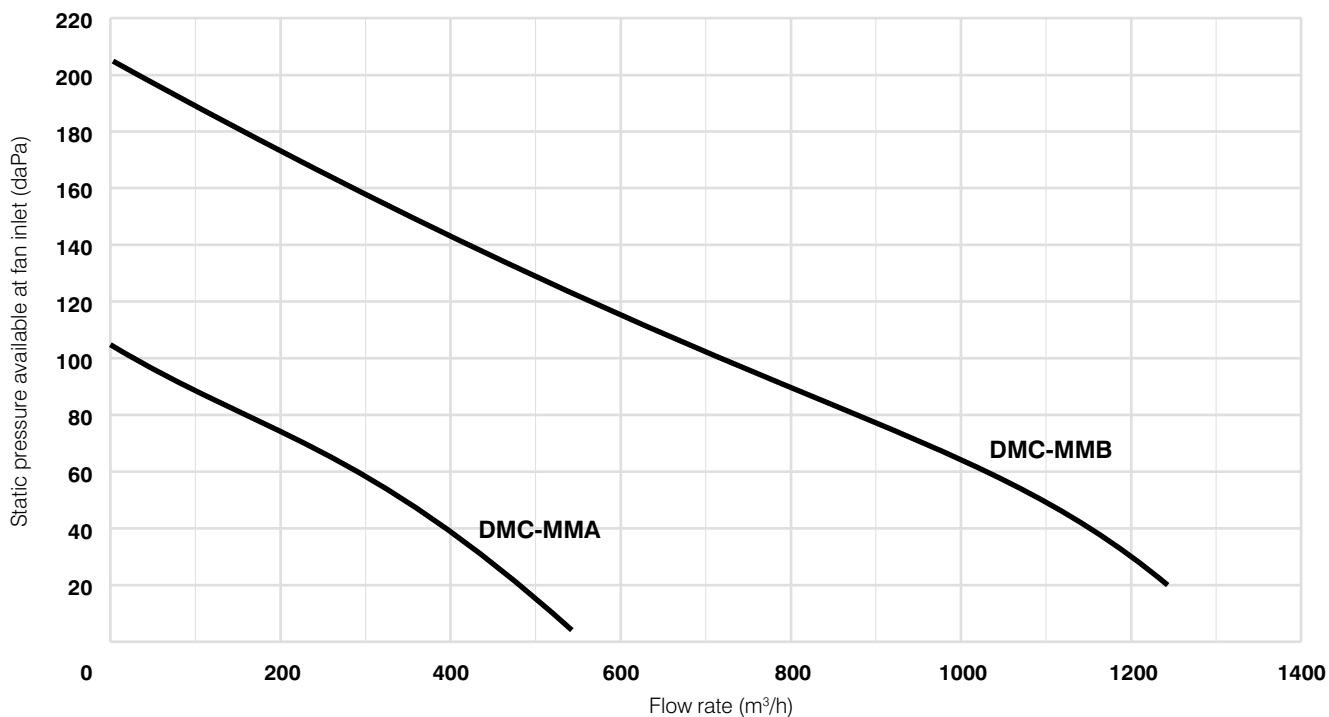
Adjustable mounting stand (DMC-MMA only)



Inlet hopper with leg pack (DMC-MMA only)



Inlet hopper with leg pack (DMC-MMB only)



Fan performance curves

FAN SELECTION

These curves indicate static pressure available at fan inlet for a given application, when fitted into a collector.

To select the most suitable fan for a given application:

- 1 Determine the air volume, in m³/h, needed to entrain the oil mist.
- 2 Estimate pressure drop through connected system – i.e. between point of entrainment and collector inlet.
- 3 Assess pressure drop over mist collector prior to replacing filter elements, usually 100 daPa.
- 4 The sum of **2** and **3** = static pressure at fan inlet.
- 5 Consult graph for fan performance available.

FAN NOISE

	DMC-MMA	DMC-MMB
LpAeq*	65 dB(A)	69 dB(A)

* Measurement according to DIN 45635/1 at 1m distance, in semi-free field conditions, usual tolerance ±2 dB(A)

FAN MOTOR SPECIFICATIONS

Voltage: 230V/400V
 Cycle: 50 Hz
 Speed: 2750 RPM for DMC-MMA
 2800 RPM for DMC-MMB
 Insulation class: F
 Protection class: IP55

DESIGN SPECIFICATIONS (standard equipment)

Operating temperature: 5° to 60°C
Power supply: 3 x 230V + Pe-50 Hz
 3 x 400V + Pe-50 Hz
Finishing: Polyester paint colour RAL 5019 (blue)



www.toritdce.com
 www.donaldson.com

Humberstone Lane
 Thurmaston
 Leicester LE4 8HP
 England

Tel +44 (0)116 269 6161
 Fax +44 (0)116 269 3028

Email: toritdce.uk@mail.donaldson.com

Research Park Zone 1
 Interleuvenlaan 1
 B-3001 Leuven (Heverlee)
 Belgium

Tel +32 (0)16 383 970
 Fax +32 (0)16 383 938

Email: toritdce.be@mail.donaldson.com