

Donaldson®  
Torit®

**TORIT® POWERCORE®**  
**DUST COLLECTORS**  
TG SERIES

 **PowerCore®**  
**Smaller. Smarter Collectors.™**



## THE BEST COMBINATION OF FOOTPRINT, APPEARANCE AND PERFORMANCE

The **NEW** Torit PowerCore TG Series designed for thermally generated dust is reshaping the future of dust and fume collection technology. Torit PowerCore TG is in a category by itself with a **footprint up to 65% smaller** than most cartridge collectors and smarter technology housed in the **widest range of completely packaged and assembled units available up to 10,000 cfm**. Torit PowerCore TG is the new way to get cleaner air in welding, laser cutting, plasma cutting, and thermal spray applications.

Torit PowerCore TG collectors' strong and sleek all-welded housing is the ideal fit as a stand-alone on the plant floor or integrated into an OEM design. Factor in the **energy saver package, quiet motor and smart controls** specifically designed for metalworking, and the choice is clear. Torit PowerCore TG is the best combination of footprint, appearance and performance

### TORIT POWERCORE TG

- **SMALLER**
- **SMARTER**
- **EFFICIENT**
- **COST EFFECTIVE**
- **COMPLETE**



(5500 cfm collectors)  
**Torit PowerCoreTG4**  
vs. Traditional 8-Cartridge Filter Collector

## POWERCORE FILTER PACK—NOT A BAG, NOT A CARTRIDGE

What makes Torit PowerCore TG so smart? The difference is compact PowerCore filter packs with easy-grip handles that don't require tools. A complete departure from the traditional cartridge filter, offset-stack PowerCore filter packs with high performance flame-retardant Ultra-Web® filter media combine Donaldson Torit's proprietary technologies that are proven in the field for more than 10 years and backed by over 300 issued and over 400 pending patents. Best of all, one PowerCore filter pack replaces up to three traditional cartridge filters, resulting in fewer, faster filter changes.

- **SMALLER FOOTPRINTS**  
Save valuable floor space
- **SMARTER FILTER PACKS**  
Reduce maintenance and don't require tools
- **EFFICIENT FILTER MEDIA**  
Rated MERV 13
- **COST EFFECTIVE**  
PowerCore filtration technology means reduced freight and installation costs
- **COMPLETELY PACKAGED**  
Completely assembled and pre-wired



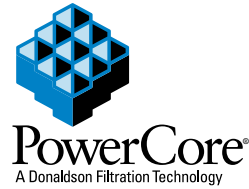
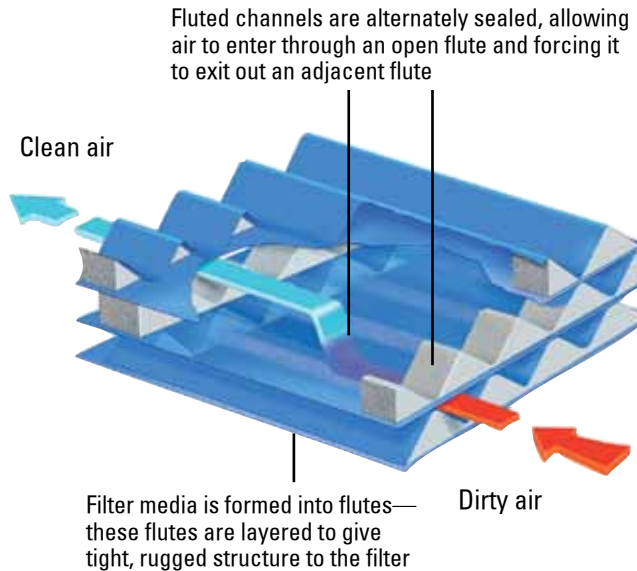
.....replaces up to .....



**POWERCORE FILTER PACKS – ENGINEERED TO PERFORM**

**LEADING THE WAY WITH POWERCORE**

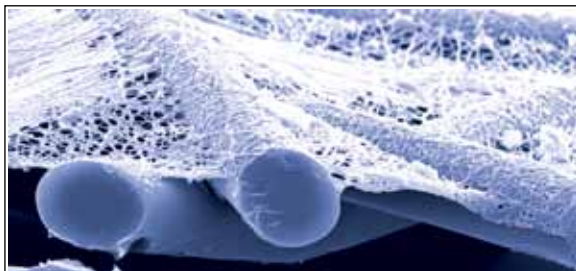
At the Core is PowerCore. PowerCore filter packs combine flame-retardant Ultra-Web nanofiber technology with Donaldson’s media configuration expertise. The result is a revolutionary new filtration technology unlike anything else in the industrial filtration market. As a result, more effective filtration area is packaged into smaller spaces.



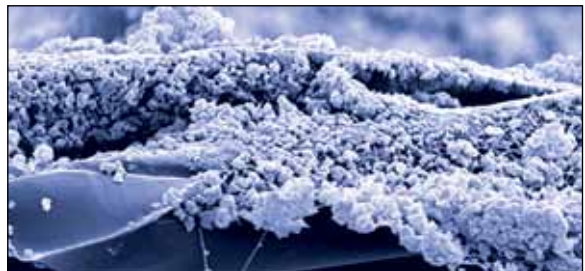
**HIGH PERFORMANCE FILTER MEDIA**

In a dramatic departure from conventional cartridge filters, Donaldson leverages almost 100 years of air filtration experience in the development of PowerCore TG filter packs with flame-retardant Ultra-Web media. Ultra-Web nanofiber media incorporates a durable layer of premium nanofiber which is designed to intercept even the smallest dust and fume particles at the surface of the media flutes.

**Clean Ultra-Web Media**



**Surface-Loaded Ultra-Web Media (substrate still clean)**



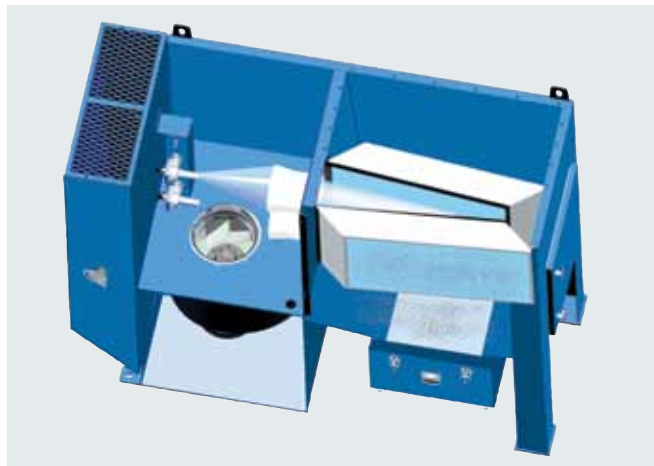
Donaldson Torit Ultra-Web technology always delivers high efficiency filters that last. Independent laboratory testing determined that PowerCore TG filter packs with Ultra-Web media have a Minimum Efficiency Reporting Value (MERV) of 13 based on ASHRAE 52.2-1999 test standard.

**OPTIMIZED AS A SYSTEM**

**SMARTER FILTER CLEANING**

Torit PowerCore TG collectors include a new state-of-the-art ZERO-Turn Power Pulse Cleaning System which is specifically designed to work in tandem with PowerCore TG filter packs and surface-loading Ultra-Web media. It delivers maximum cleaning energy in straight-line paths through the media and easily pulses the dust out of the fluted channels.

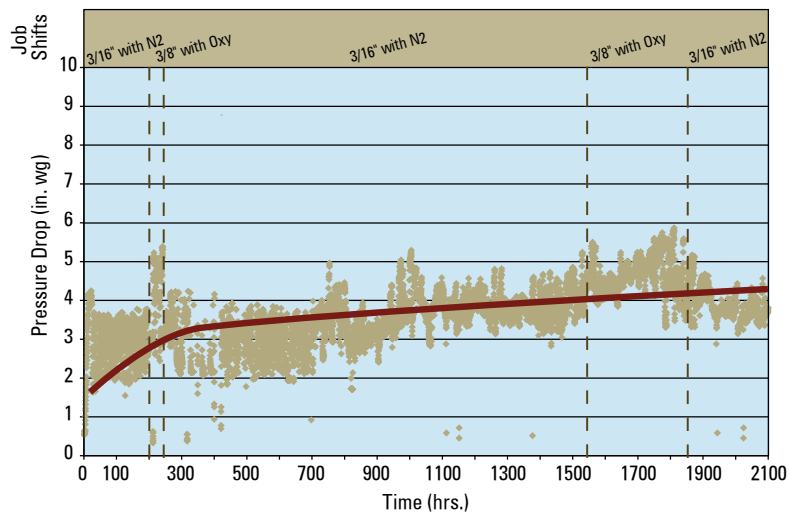
**ZERO-Turn Power Pulse Cleaning System  
TG Series**



**BETTER RECOVERY**

What about those job shifts of cutting typical 10 gauge sheet metal today and 1/4" plate tomorrow? No problem for versatile and flexible PowerCore filter packs cleaned by the channeled pulse energy of the ZERO-Turn Power Pulse Cleaning System. PowerCore filter packs recover more easily than traditional cartridge filters from dramatic spikes in pressure drop during pulse cleaning. The result is longer filter life.

**Better Cleaning Prolongs Filter Life**



## PACKAGED WITH POWER



### COMPLETELY PACKAGED

With a footprint up to 65% smaller, Torit PowerCore TG collectors provide the widest range of completely packaged units available up to 10,000 cfm.



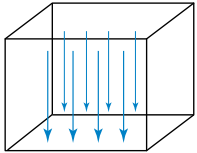
### COMPLETELY ASSEMBLED

Custom engineered components and integrated electrical controls in combination with Torit PowerCore filtration technology provide a finished product of superior quality.



### ALL WELDED

Strong and durable, all-welded TG dust collectors are the ideal fit as a stand alone on the plant floor or integrated into OEM designs.



### DOWNWARD AIRFLOW ADVANTAGE

**EPA-sponsored** research has shown that "superior performance results from downward flow of the dirty airstream, reducing re-deposition of dust onto filter packs."



### EASY FILTER ACCESS

One large access door and quick-release T-Handles provide immediate access to the easy-grip PowerCore filter packs. No tools required. Lock-out capability available.



### ZERO-TURN POWER PULSE CLEANING SYSTEM

Superior cleaning effectiveness is fully enclosed for quiet operation.



### QUIET INTEGRATED FAN PACKS

High-performance fans are mounted at the base of the unit for maximum noise control.





**PACKAGED WITH POWER**

**INTEGRATED ELECTRICAL CONTROLS**

Torit Delta P and Delta P Plus Control Boards manage all of the collector functions, including the fan, the filter differential, and the pulse cleaning system.



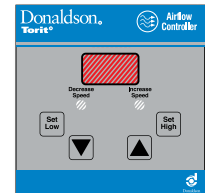
**24VDC MOTOR START/STOP FEEDBACK RELAY**

Allows an external signal to automate the remote start of the collector fan from other equipment such as a laser table.



**TORIT AIRFLOW CONTROLLER WITH VFD**

Allows the blower to automatically maintain the prescribed airflow and harness energy savings.



**PARTICULATE SENSOR**

Detects dust leaks past the filters; shuts off the dust collector and turns on a visual alarm.



**BUILT-IN SPARK ABATEMENT**

The Inline Spark Cooler by Blender Products, Inc. arrests sparks with air, reducing the frequency of sparks reaching any combustible dust collected on the surface of the filter media. The Torit TG Series Low-Inlet Box is a settling chamber which allows particulate to drop out.



**BUILT-IN SAFETY FEATURES**

The reinforced TG housing supports top-mount explosion vents, side-mount explosion vents, explosion suppression systems, fire suppression systems, heat sensors, alarm strobes, and more.



**ENERGY SAVER PACKAGE**

The combination of Torit PowerCore filter packs with Ultra-Web media, the Torit Airflow Controller with VFD, and Premium Efficiency motors make up one powerful Energy Saver Package.



## SMART RESULTS IN MANY WAYS

### HOW SMALLER MEANS SMARTER OPERATION

Torit PowerCore TG collectors are custom engineered for thermally generated dust and fume. TG collectors are completely packaged. They arrive completely assembled. They are pre-wired. TG collectors are purposely designed to take the complexity out of installation efforts and provide a finished product of superior quality.



### 7 SMART WAYS TO SAVE BIG

1. PowerCore TG collectors are smaller and weigh less
2. Smaller collectors use less floor space
3. Smaller collectors fit into tight spaces
4. Smaller collectors are easily transported or moved
5. Smaller collectors have fewer filters
6. Fewer filters mean less downtime and less maintenance
7. Completely packaged, assembled, and pre-wired TG collectors simplify the buying experience

### REAL COST CONTROL

The results are clear. Significant savings can be realized by purchasing smaller, smarter, completely packaged, fully assembled and pre-wired TG Series dust and fume collectors. TG Series collectors with innovative PowerCore filtration technology stand for:

- Reduced freight costs
- Reduced installation costs
- Reduced on-site electrical wiring costs
- Space savings
- Fewer filter changes
- Lower maintenance costs
- Energy savings





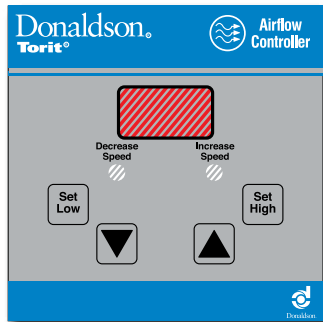
## ENVIRONMENTALLY FRIENDLY

### ENERGY SAVER PACKAGE

All good things come in threes. Torit PowerCore TG collectors offer three powerful components that allow significant energy savings.



The first building block for energy savings is comprised of TG filter packs with Ultra-Web media. Donaldson's Ultra-Web media technology provides lower pressure drop due to superior surface-loading and better dust-shedding capabilities throughout the entire filter life. Lower pressure drop during the life of a filter eases the work load on the fan. As a result energy consumption is lowered and energy savings increase.



The second building block for energy savings is made up by the Torit Airflow Controller with VFD (Variable Frequency Drive). This control panel is set-up only once during the collector start-up. It maintains the required minimum transport velocity through the collector without any manual adjustments. Therefore, the fan motor spins only as fast as it has to and generally spins at a lower RPM. Spinning at a lower RPM reduces the fan motor's energy consumption, and energy savings can be harnessed. Also, since the fan is spinning at less than full speed, the noise radiating from the fan housing and from the fan motors is also reduced significantly.



The third building block for energy savings is a Premium Efficiency Motor, which is designed to boost efficiency with less heat. Since less heat is generated, less energy is needed to cool the motor with a fan—further improving energy savings.



Shown above is a Baldor Premium Efficiency Motor.

The combination can't be beat. The energy savings from using the TG Energy Saver Package can generally offset higher component costs within approximately 5000 hours based on current average utility rates. Industry rebates from local utility may apply for use of the Torit Airflow Controller with VFD and Premium Efficiency motors, which helps to offset initial project costs.

## MAKING MAINTENANCE EASIER

### EASY FILTER MAINTENANCE

Torit PowerCore TG filter packs are easy to remove and install. **No tools required.** Better yet, it takes only one person to do the job. Just open the T-Handles on the front access door and open the patent pending rotary filter locks to get instant access to the filter packs. PowerCore filter packs are lightweight and remain below the 50-pound OSHA Lift Limit even at the end of their life cycle.



### EASY CLEANING

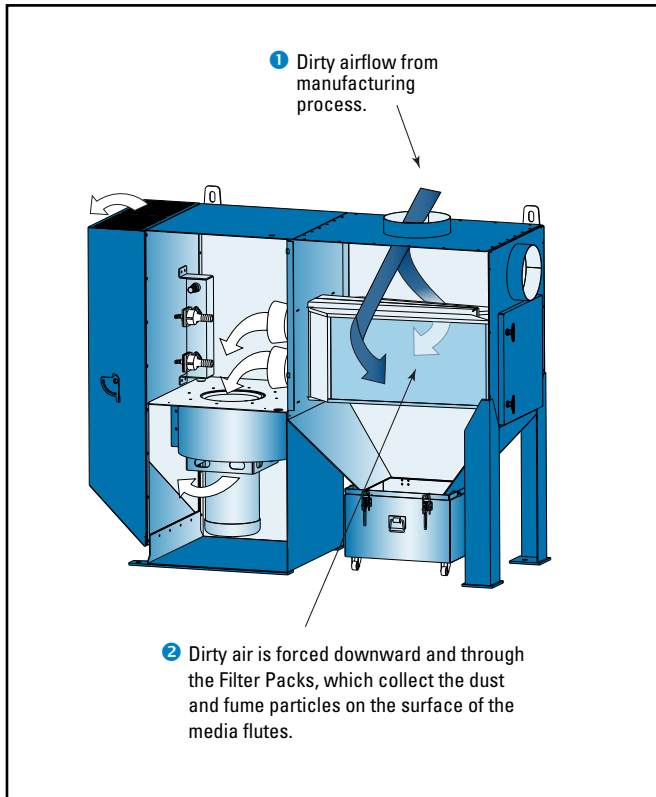
The Low-Inlet Box employs a dust removal concept that utilizes the velocity and physical properties inherent in the dust to effectively remove particulate from the system flow at a negligible pressure loss to the system. The dust drops out and collects into a dust drawer located at the bottom of the chamber. Quick-release latches allow fast removal of the dust drawer for clean up.



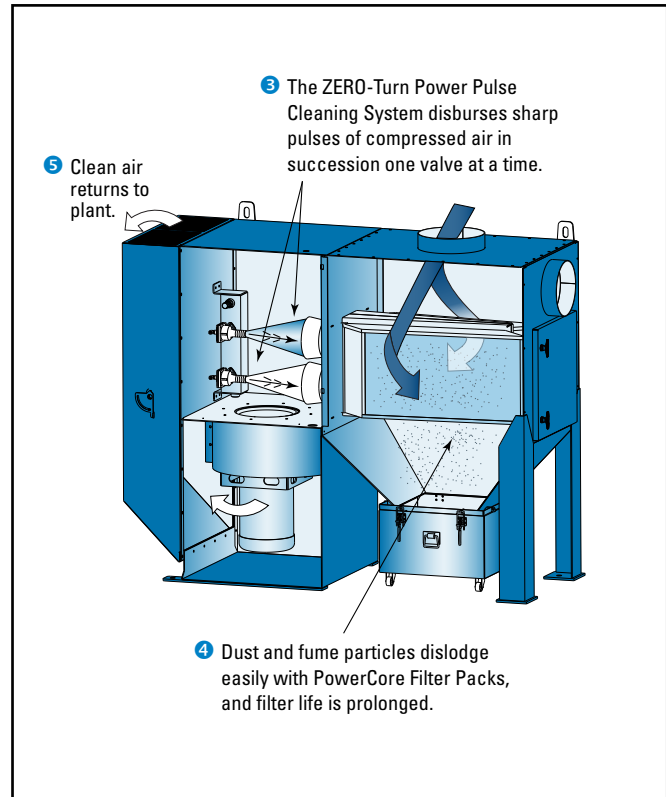
## OPERATING ADVANTAGES & CONDITIONS

### HOW THE TG SERIES WORKS

#### Normal Operation



#### Filter Cleaning Operation



### ADDRESSING SAFETY CONCEPTS

Donaldson® Torit® manufactures and partners with recognized experts to provide solutions for critical processes where harmful particulate must be controlled.

#### Torit PowerCore TG collectors offer:

- Reinforced Housing Construction
- Low-Inlet Drop-Out Box
- Inline Spark Cooler
- Composite-Style Explosion Relief Panels
- Fire Suppression
- Explosion Suppression
- Heat Sensors
- Alarm Strobes

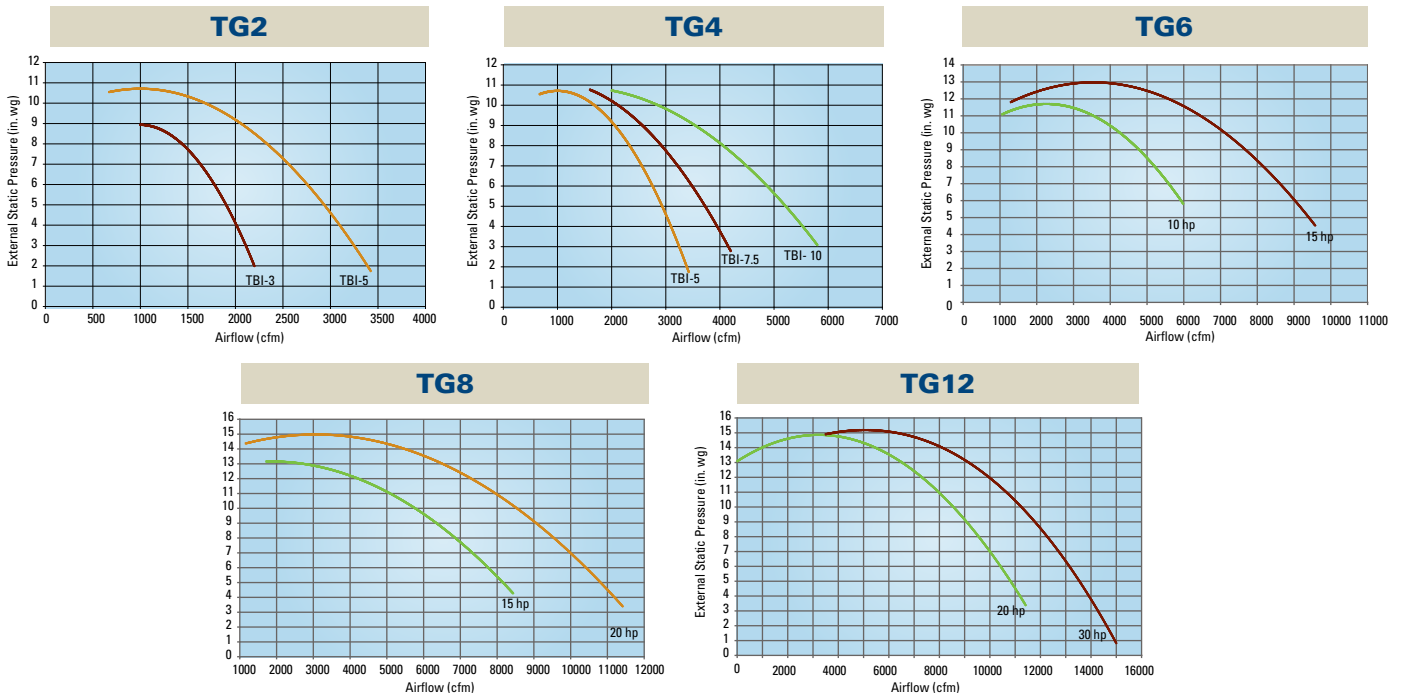
**OPERATING ADVANTAGES & CONDITIONS**

**OPERATING CONDITIONS FOR TG COLLECTORS**

TG Models	TG2	TG4	TG6	TG8	TG12
Horsepower	5 (3)	7.5 (5,10)	10 (15)	15 (20)	20 (30)
Sound Level db(A)	71-74 dB(A) depending on HP. Peak pulse noise is 92.7 dB(A)				
External Static Pressure	See system performance curves				
Housing Construction	3/16 - 12 gauge steel compliant with IBC2006				
STD Housing Rating	-12"	-12"	-15"	-15"	-15"
Reinforced Housing Rating	.15 bar	.15 bar	.2 bar	.32 bar	.16 bar
Seismic Spectral Acceleration	$S_s = 1.5$ $S_1 = 0.6$				
Wind Load Rating (mph)	90				
Compressed Air Required (psig)	90-100				
Operating Temperature	180				
Control Voltage	120 VAC -or- 24 VDC				
Valves/Controls	60 Hz				

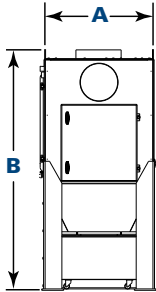
**SYSTEM CURVES**

Unlike other technologies that require upgrades for more demanding applications, each TG footprint comes standard with a unique high performance power pack. The system performance graphs below show the fan performance with clean filters. The curve indicates available external static pressure to the unit.

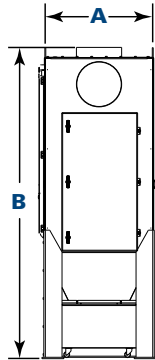


**DIMENSIONS & SPECIFICATIONS**

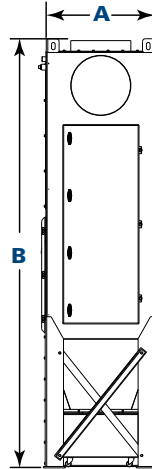
**MODELS TG2 THROUGH TG12**



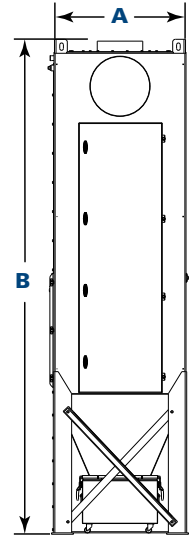
**TG2**  
Front View



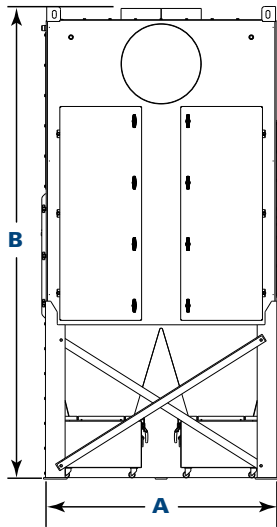
**TG4**  
Front View



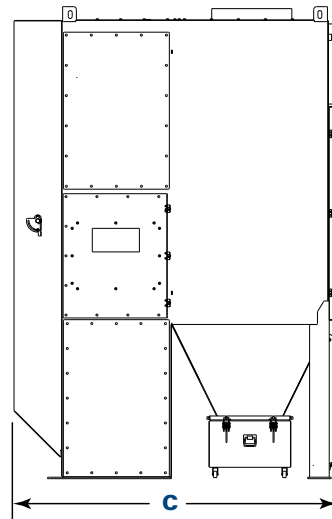
**TG6**  
Front View



**TG8**  
Front View



**TG12**  
Front View



**TG2, 4, 6, 8, 12**  
Side View

Model	Nominal Airflow Range* (cfm)	No. of Filter Packs	PowerCore Filter Area (ft <sup>2</sup> )	No. of Valves	Shipping Weight			Dimensions (inches)		
					Std Housing (lbs)	R Housing (lbs)	Low-Inlet Box (lbs)	A	B	C
TG2	960 - 3200	2	320	2	1300	1350	1700	31.2	66.6	83.2
TG4	1920 - 5500	4	640	4	1600	1650	2025	31.2	86.1	83.2
TG6	2880 - 8640	6	960	6	2250	2350	2675	31.2	117.2	83.2
TG8	3840 - 11,520	8	1280	8	2900	3100	3370	37.2	135.0	83.2
TG12	5760 - 13,440	12	1920	12	3900	4100	4370	59.7	120.3	83.2

\* Based on clean filters.



**SMARTER PERFORMANCE ON HUNDREDS OF APPLICATIONS**

While PowerCore filter packs are new to the metalworking market, they have proven track record in other related filtration industries. Donaldson offers them in many shapes and sizes for high performance vehicles, construction, agricultural and medium/heavy duty transportation applications as well as gas turbine air intakes that protect multi-million dollar turbine engines for power plants across the globe. Just 18 months ago, Donaldson Torit introduced the CPC and CPV PowerCore collectors for the baghouse markets.



**TG6**  
on plasma cutting



**TG4**  
on plasma cutting



**TG4**  
on welding

Visit [donaldson.com/ToritPowercore](http://donaldson.com/ToritPowercore) for latest case studies.

**STANDARD FEATURES & AVAILABLE OPTIONS**

	Standard	Optional
<b>Collector Design</b>		
Standard Housing	X	
Reinforced Housing		X
Robust All-Welded Construction	X	
Strong 3/16 to 12 Gauge Mild Steel Structure per IBC2006	X	
Downward Airflow Advantage	X	
Inlet (Top or High Front)	X	
Low-Inlet Drop-Out Box		X
Easy Filter Access – No Tools Required	X	
One Access Door with T-Handle Compression Latches	X	
Filter Cradles with Rotary Filter Locks	X	
ZERO-Turn Power Pulse Cleaning System	X	
Integrated High-Performance TEFC Fan Packs	X	
Integrated High-Static TEFC Fan Packs		X
Premium Efficiency Motors PE		X
Integrated High-Performance EXPR Fan Packs		X
Integrated High-Static EXPR Fan Packs		X
Sprinkler Couplings	X	
Built-In Exhaust Silencer	X	
Built-In Damper Valve	X	
Top Exhaust Outlet	X	
Integrated Rear HEPA Filters		X
Rear Weatherhood		X
Top Mount HEPA Filters		X
<b>Cost Control</b>		
Completely Packaged—One-Stop Shopping	X	
Fully Assembled—Minimal Installation Efforts	X	
Pre-Wired—Minimal On-Site Wiring	X	
Smaller Collectors—Save Freight Costs & Space	X	
Fewer Filter Changes—Less Downtime, Maintenance	X	
Quiet Energy Efficient Power Packs	X	
Energy Saver Package		X
<b>Safety Features</b>		
Top-Mount Explosion Vents per NFPA 68-2007		X
Side-Mount Explosion Vents per NFPA 68-2007		X
Explosion Suppression		X
Sprinkler Pack		X
Electrical Grounding and Bonding		X
Inline Spark Cooler		X
Fire Suppression		X

	Standard	Optional
<b>Filter Packs</b>		
PowerCore FR (Flame-Retardant) with Ultra-Web (MERV 13)*	X	
PowerCore AS (Anti-Static) with Ultra-Web (MERV 13)*		X
<b>Hopper Discharge</b>		
22-Gallon Dust Container		X
<b>Electrical Controls</b>		
Integrated Torit Delta P w/Motor Starter		X
Integrated Torit Delta P Plus w/Motors Starter		X
with 24VDC START/STOP, Low-Voltage Feedback Relay		X
External Remote-Mount Torit Delta P w/Motor Starter		X
External Remote-Mount Torit Delta P Plus w/Motor Starter		X
with 24VDC START/STOP, Low-Voltage Feedback Relay		X
with Particulate Sensor		X
with Airflow Controller with VFD		X
Integrated Electrical Enclosures NEMA 12	X	
Remote-Mount Electrical Enclosures NEMA 4	X	
<b>Paint System</b>		
Polyester Textured Finish		X
Hostile Environment Finish		X
Custom Colors, Materials, and Finishes		X
<b>Why Buy from Donaldson Torit?</b>		
10-Year Warranty		X
Global Representation		X
Largest Application Engineering Support		X
Largest Field Service Network		X
Replacement Filters Ship in 24 Hours or Less - Guaranteed		X

Torit PowerCore, Ultra-Web, Donaldson Torit, and the color blue are registered trademarks of Donaldson Company, Inc.

\* The Minimum Efficiency Reporting Value (MERV) of this filter cartridge has been determined through independent laboratory testing using ASHRAE 52.2 (1999) test standards. The MERV rating was determined at a face velocity of 118 feet per minute and loading up to four inches water gauge. Actual efficiency of any filter cartridge will vary according to the specific application parameters. Dust concentration, airflow, particle characteristics, and pulse cleaning methods all affect filtration efficiency.



## LEADING TECHNOLOGY



- Over 1,000 engineers and scientists worldwide
- Over 1,500 issued, active and pending patents
- Broad range of innovative collectors and filters
- 100's of filter media formulations

## EXPERIENCE & SERVICE



- Technical expertise and support
- Ready-to-ship filters and parts within 24 hours
- 1,000,000+ dust, fume, and mist collectors installed

## GLOBAL SUPPORT



- Facilities in 37 countries
- 40 manufacturing plants and 14 distribution centers
- Sales offices worldwide



**Call Donaldson Torit  
to get Cleaner Air today  
800-365-1331**

[Donaldson.com/ToritPowerCore](http://Donaldson.com/ToritPowerCore)