

- Nanofiber technology ensures longer filter life at a significantly lower pressure drop
- Substrate media features increased rigidity, higher durability, and superior cleanability
- MERV* 15 filtration efficiency rating per ASHRAE 52.2-2007
- Carbon impregnated media dissipates static charge build up
- Superior particle release due to surface filtration
- Lower pressure drop saves energy
- Longer filter life reduces replacement and maintenance costs
- Stainless steel construction available



Ultra-Web® AS Cartridge

APPLICATIONS

- Premium performance on extremely fine, dry, and combustible dust
- Durable for more abrasive dust

THE ULTRA-WEB ADVANTAGE IS CLEANER AIR

Ultra-Web® is proprietary and made with an electrospinning process that produces a very fine, continuous, resilient fiber of 0.2-0.3 micron in diameter to form a permanent web-like net. This nanofiber “web” with its very fine interfiber spaces is constructed onto tough cellulose substrate media, resulting in:

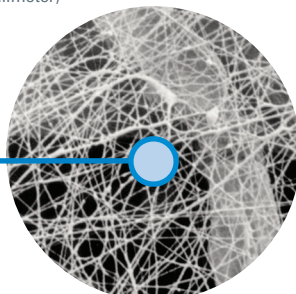
- A more robust media that captures even submicron dust on the surface
- Better pulse cleaning and lower pressure drop
- Cleaner air, longer filter life, and greater cost savings

SEM IMAGES

1 micron = 1/25,400 of an inch (1/1000 of a millimeter)

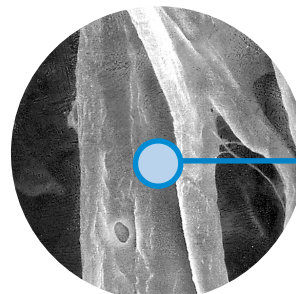
10 micron

Ultra-Web (600x)
Featuring Nanofiber Technology



10 micron

Cellulose Media (600x)



SPECIFICATIONS

MEDIA COMPOSITION	
Nanofiber Technology	Durable proprietary synthetic filter media fibers and polymer Mean fiber diameter of 0.2 µm
Substrate	Premium blend of carbon impregnated cellulose fibers
MEDIA COMPATIBILITY DATA	
Temperature Resistance	180°F / 82°C
Moisture Absorption**	Maximum 14% @ 70°F (21°C) and 65% RH
Chemical Tolerance***	Acids→Poor Oxidants→Poor Bases→Fair Solvents→Fair
Abrasion Resistance	Good per TAPPI 476 (Taber Method)

CARTRIDGE CONSTRUCTION	
Standard Construction	Galvanized metal end caps Galvanized expanded metal liner 72% open area Urethane gasket
Options	Stainless steel liner and end caps No outer liner version EPDM gasket
Conductivity	10 ⁸ OHM Resistance

MEDIA EFFICIENCY	
U.S. Efficiency Rating	MERV* 15 per ASHRAE 52.2-2007

CONFIGURATIONS

Models	Filtration Area		Pleat Height		Dimensions	
	ft ²	m ²	in	mm	in	mm
BinVent (TBV)	226.0	21.0	2.0	50.8	12.74 x 26.0	323.6 x 660.4
Downdraft Bench	254.0	23.6	2.0	50.8	13.84 x 26.0	351.5 x 660.4
Downflo® (DF)	226.0	21.0	2.0	50.8	12.74 x 26.0	323.6 x 660.4
Downflo II (DFT)	254.0	23.6	2.0	50.8	13.84 x 26.0	351.5 x 660.4
Downflo Oval (DFO)	190.0	17.7	1.5	38.1	11.4 x 14.4 x 26.0	288.5 x 364.7 x 660.4
Downflo Evolution (DFE)	254.0	23.6	2.0	50.8	13.74 x 13.74 x 26.0	349.1 x 349.1 x 660.4
Downflo WorkStation (DWS)	190.0	17.7	1.5	38.1	11.4 x 14.4 x 26.0	288.5 x 364.7 x 660.4
Downflo (SDF)	103.0	9.6	2.0	50.8	9.2 x 22.3	233.9 x 566.1
Downflo Containment System (DCS)	190.0	17.7	1.5	38.1	11.4 x 14.4 x 26.0	288.5 x 364.7 x 660.4
Environmental Control Booth (ECB)	226.0	21.0	2.0	50.8	12.74 x 26.0	323.6 x 660.4
MTD	226.0	21.0	2.0	50.8	12.74 x 26.0	323.6 x 660.4
TD Large	226.0	21.0	2.0	50.8	12.74 x 26.0	323.6 x 660.4
TD Small	60.0	5.6	2.0	50.8	7.9 x 16.0	201.4 x 406.4

* The Minimum Efficiency Reporting Value (MERV) of this filter cartridge has been determined through independent laboratory testing using ASHRAE 52.2 (2007) test standards. The MERV rating was determined at a face velocity of 118 feet per minute (36.0 meters per minute) and loading up to four inches (101.6 millimeters) water gauge. Actual efficiency of any filter cartridge will vary according to the specific application parameters. Dust concentration, airflow, particle characteristics, and pulse cleaning methods all affect filtration efficiency.

** Environmental conditions involving combinations of high temperature, corrosive material, and moisture can reduce media strength. Reduction in media strength may compromise cartridge integrity and performance.

*** A combination of chemicals may alter fiber resistance to the specified performance level. Chemical attack may compromise cartridge integrity and performance.

Significantly improve the performance of your collector with genuine Donaldson Torit replacement filters and parts. **Call Donaldson Torit today 800-365-1331.**



Tel 800-365-1331 (USA)
Tel 800-343-3639 (within Mexico)

donaldsontorit@donaldson.com
donaldsontorit.com

Donaldson Company, Inc.
Torit
P.O. Box 1299
Minneapolis, MN
55440-1299 U.S.A.

EXACTLY WHAT YOU NEED.™

Ultra-Web® AS Cartridge (6/15)
© 2013 Donaldson Company, Inc. All Rights Reserved. Information in this document is subject to change without notice. Donaldson Torit, Torit PowerCore, Ultra-Web, and the color blue are registered trademarks of Donaldson Company, Inc. Contains Donaldson proprietary technology.